

# Contact insert module - HC-M-05-PT-F

1417373

ID:1417373

Please be informed that the data shown in this PDF document is generated from our Online Catalog. Please find the complete data in the user documentation. Our General Terms of Use for Downloads are valid.



Contact insert module, number of positions: 5, power contacts: 5, control contacts: 0, Socket, Push-in connection, 400 V, 16 A, 0.14 mm<sup>2</sup> ... 2.5 mm<sup>2</sup>, application: Power

## Your advantages

- Easy installation without tools, even when mounted, with push-in connection technology
- Shortest installation time compared to other connection technologies
- Quick and effortless wiring, in particular when space is tight
- Automatic cabling with robots possible
- Safe wiring and operation with color-coded actuators
- Shock and vibration-resistant in accordance with DIN EN 61373

## Commercial Data

Item number	1417373
Packing unit	5 pc
Minimum order quantity	5 pc
Product Key	BF7ACE
Catalog Page	Page 577 (C-2-2019)
GTIN	4055626112558
Weight per Piece (including packing)	16.21 g
Weight per Piece (excluding packing)	16.21 g
Customs tariff number	85366990
Country of origin	PL

# Contact insert module - HC-M-05-PT-F

1417373

ID:1417373

## Technical Data

### Notes

General	only use flexible conductors with ferrules
General	Connectors may be operated only when there is no load/voltage.
General	For HEAVYCON housing type B6 to B48, HC-M-B...MF... module carrier frame required

### Product properties

Product type	Modular contact insert
Number of positions	5
Connection profile	5
Application	Power
Number of module slots	1
No. of power contacts	5
No. of control contacts	0
Contact type	rolled
Series	HC-M-05

### Insulation characteristics

Overvoltage category	III
Degree of pollution	3

### Connection data

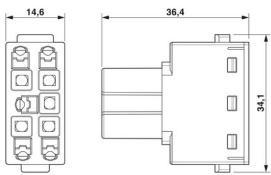
#### Connection technology

Connection technology	Push-in connection
-----------------------	--------------------

#### Conductor connection

Conductor cross section	0.14 mm <sup>2</sup> ... 2.5 mm <sup>2</sup>
	0.14 mm <sup>2</sup> ... 2.5 mm <sup>2</sup>
Connection cross section AWG	26 ... 14
Stripping length of the individual wire	8 mm ±1 mm

### Dimensions

Dimensional drawing	
Width	34.2 mm
Height	34 mm
Length	14.6 mm

### Mechanical characteristics

# Contact insert module - HC-M-05-PT-F

1417373

ID:1417373

Minimum housing height	52 mm
Contact diameter	2.5 mm

## Electrical properties

Rated voltage (III/3)	400 V
Rated surge voltage	4 kV
Rated current	16 A

## Material specifications

Color	light grey
Flammability rating according to UL 94	V0
Contact material	Copper alloy
Contact surface material	Ag
Contact carrier material	PC
Standards/regulations	PC: Fire protection in rail vehicles - requirement sets R22, R23, and R24 acc. to DIN EN 45545-2 (Risk level HL1 - HL3)

## Connector

Insertion/withdrawal cycles	≥ 500
-----------------------------	-------

## Cable / line

Stripping length of the individual wire	8 mm ±1 mm
---	------------

## Mounting

Assembly instructions	To ensure correct use, installation in housing with IP54 protection or better is required
-----------------------	---

## Ambient conditions

Ambient temperature (operation)	-40 °C ... 125 °C
---------------------------------	-------------------

## Standards and regulations

### Testing

Standards/regulations	PC: Fire protection in rail vehicles - requirement sets R22, R23, and R24 acc. to DIN EN 45545-2 (Risk level HL1 - HL3)
-----------------------	---

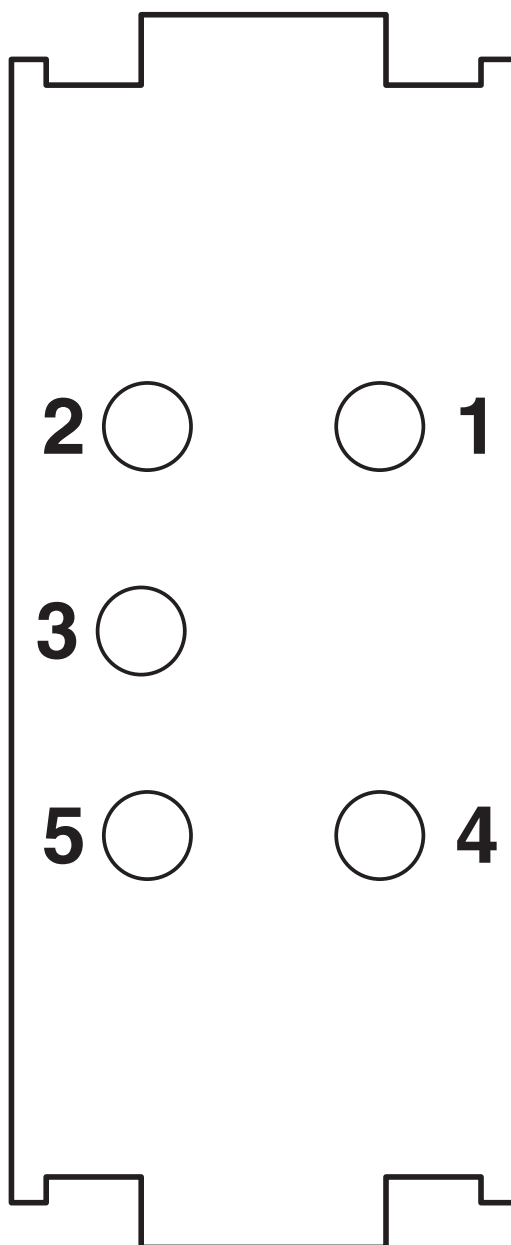
# Contact insert module - HC-M-05-PT-F

1417373

ID:1417373

## Drawings

Schematic diagram

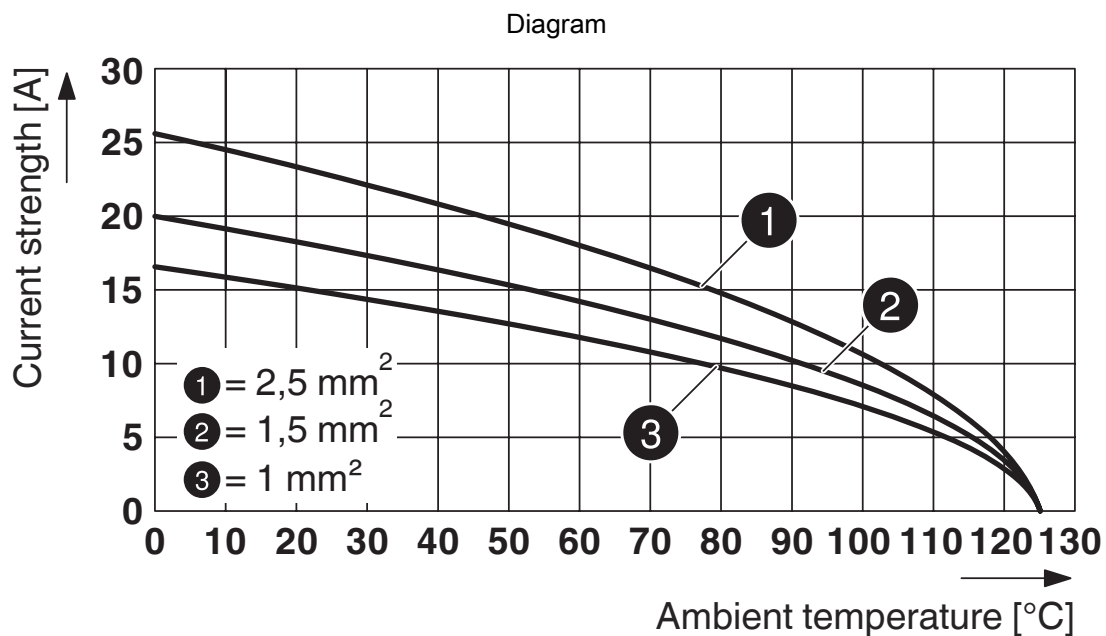


Connector pin assignment, connection side

# Contact insert module - HC-M-05-PT-F

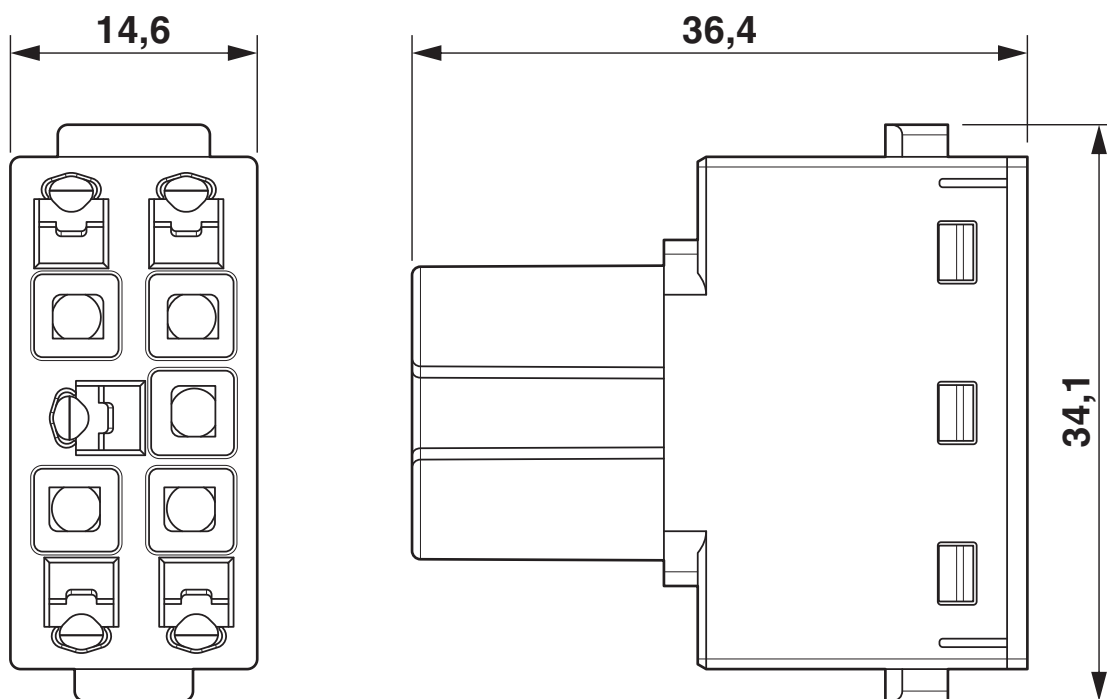
1417373

ID:1417373



Derating diagram (6 modules in HC-B 24 housing)

Dimensional drawing



Dimensional drawing

# Contact insert module - HC-M-05-PT-F


1417373

ID:1417373

## Approvals

 <b>CSA</b> Approval ID: 13631	Nominal Voltage $U_N$	Nominal Current $I_N$	Cross Section AWG	Cross Section $\text{mm}^2$
	600 V	15 A	- 14	-

 <b>UL Recognized</b> Approval ID: E118976	Nominal Voltage $U_N$	Nominal Current $I_N$	Cross Section AWG	Cross Section $\text{mm}^2$
	600 V	19 A	- 14	-

 <b>EAC</b> Approval ID: RU C-DE.AI30.B.01102
---

 <b>EAC</b> Approval ID: RU C-DE.BL08.B.00511
---

# Contact insert module - HC-M-05-PT-F

1417373

ID:1417373

## Classifications

### ECLASS

ECLASS-9.0	27440217
ECLASS-10.0.1	27440217
ECLASS-11.0	27440217

### ETIM

ETIM 8.0	EC000438
----------	----------

### UNSPSC

UNSPSC 21.0	39121400
-------------	----------

# Contact insert module - HC-M-05-PT-F

1417373

ID:1417373

## Environmental Product Compliance

China RoHS	Environmentally friendly use period: unlimited = EFUP-e No hazardous substances above threshold values
------------	---



# Contact insert module - HC-M-05-PT-F

1417373

ID:1417373

## Accessories

### Coding element

Coding element - HC-CBU-MOD - 1636130

ID:1636130



Coding socket for coding up to 16 connectors, for HC Modular

---

### Coding element

Coding element - HC-CST-MOD - 1636127

ID:1636127



Coding peg for coding up to 16 connectors, for HC Modular

---

# Contact insert module - HC-M-05-PT-F

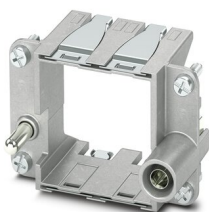
1417373

ID:1417373

## Module carrier frame

Module carrier frame - HC-M-B06-MFH-B - 1182085

ID:1182085



Module carrier frame, size: B6, type : for the panel mounting side (a, b, c, ...), 4 mm<sup>2</sup> ... 6 mm<sup>2</sup>, application: Module carrier frame

---

## Module carrier frame

Module carrier frame - HC-M-B10-MFH-B - 1182088

ID:1182088



Module carrier frame, size: B10, type : for the panel mounting side (a, b, c, ...), 4 mm<sup>2</sup> ... 6 mm<sup>2</sup>, application: Module carrier frame

# Contact insert module - HC-M-05-PT-F

1417373

ID:1417373

## Module carrier frame

Module carrier frame - HC-M-B16-MFH-B - 1182090

ID:1182090

Module carrier frame, size: B16, type : for the panel mounting side (a, b, c, ...), 4 mm<sup>2</sup> ... 6 mm<sup>2</sup>, application: Module carrier frame



---

## Module carrier frame

Module carrier frame - HC-M-B24-MFH-B - 1182094

ID:1182094

Module carrier frame, size: B24, type : for the panel mounting side (a, b, c, ...), 4 mm<sup>2</sup> ... 6 mm<sup>2</sup>, application: Module carrier frame



# Contact insert module - HC-M-05-PT-F

1417373

ID:1417373

## Module carrier frame

Module carrier frame - HC-M-B06-MFH-H - 1182087

ID:1182087



Module carrier frame, size: B6, type : for the sleeve side (A, B, C, ...), 4 mm<sup>2</sup> ... 6 mm<sup>2</sup>, application: Module carrier frame

---

## Module carrier frame

Module carrier frame - HC-M-B10-MFH-H - 1182089

ID:1182089



Module carrier frame, size: B10, type : for the sleeve side (A, B, C, ...), 4 mm<sup>2</sup> ... 6 mm<sup>2</sup>, application: Module carrier frame

# Contact insert module - HC-M-05-PT-F

1417373

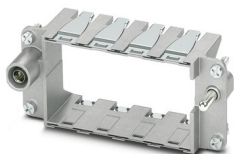
ID:1417373

## Module carrier frame

Module carrier frame - HC-M-B16-MFH-H - 1182093

ID:1182093

Module carrier frame, size: B16, type : for the sleeve side (A, B, C, ...), 4 mm<sup>2</sup> ...  
6 mm<sup>2</sup>, application: Module carrier frame



---

## Module carrier frame

Module carrier frame - HC-M-B24-MFH-H - 1182095

ID:1182095

Module carrier frame, size: B24, type : for the sleeve side (A, B, C, ...), 4 mm<sup>2</sup> ...  
6 mm<sup>2</sup>, application: Module carrier frame



# Contact insert module - HC-M-05-PT-F

1417373

ID:1417373

## Crimping pliers

Crimping pliers - CRIMPFOX CENTRUS 6S - 1213144

ID:1213144



Crimping pliers, for uninsulated and insulated ferrules, DIN 46228 Part 1 and 4, from 0.14 mm<sup>2</sup> ... 6 mm<sup>2</sup>, also for TWIN ferrules up to 2 x 4 mm<sup>2</sup>, automatic cross section adjustment, lateral insertion, equipped with fall protection

---

## Crimping pliers

Crimping pliers - CRIMPFOX 6 - 1212034

ID:1212034



Crimping pliers, for ferrules without insulating collar according to DIN 46228 Part 1 and ferrules with insulating collar according to DIN 46228 Part 4, 0.25 mm<sup>2</sup> ... 6.0 mm<sup>2</sup>, lateral entry, trapezoidal crimp

# Contact insert module - HC-M-05-PT-F

1417373

ID:1417373

## Electrical crimping tool

Electrical crimping tool - CF CRIMPHANDY 0,5 - 1212463

ID:1212463



Mobile handheld device, battery-powered, for processing on-tape ferrules 0.5 mm<sup>2</sup> with functional end, suitable for PVC insulated conductors (H05V-K), incl. battery, charger, CUTFOX 12 cable cutter, waste guide plate 2, service tool for error correction, and one strip of ferrules 0.5 mm<sup>2</sup>, packed in a robust case.

---

## Electrical crimping tool

Electrical crimping tool - CF CRIMPHANDY 0,75 - 1212464

ID:1212464



Mobile handheld device, battery-powered, for processing on-tape ferrules 0.75 mm<sup>2</sup> with functional end, suitable for PVC insulated conductors (H05V-K), incl. battery, charger, CUTFOX 12 cable cutter, waste guide plate 2, service tool for error correction, and one strip of ferrules 0.75 mm<sup>2</sup>, packed in a robust case.

# Contact insert module - HC-M-05-PT-F

1417373

ID:1417373

## Electrical crimping tool

Electrical crimping tool - CF CRIMPHANDY 1,0 - 1212465

ID:1212465



Mobile handheld device, battery-powered, for processing on-tape ferrules 1.0 mm<sup>2</sup> with functional end, suitable for PVC insulated conductors (H05V-K), incl. battery, charger, CUTFOX 12 cable cutter, waste guide plate 2, service tool for error correction, and one strip of ferrules 1.0 mm<sup>2</sup>, packed in a robust case.

---

## Electrical crimping tool

Electrical crimping tool - CF CRIMPHANDY 1,5 - 1212466

ID:1212466



Mobile handheld device, battery-powered, for processing on-tape ferrules 1.5 mm<sup>2</sup> with functional end, suitable for PVC insulated conductors (H07V-K), incl. battery, charger, CUTFOX 12 cable cutter, waste guide plate 2, service tool for error correction, and one strip of ferrules 1.5 mm<sup>2</sup>, packed in a robust case.



# Contact insert module - HC-M-05-PT-F

1417373

ID:1417373

## Contact insert module

Contact insert module - HC-M-05-PT-M - 1417372

ID:1417372



Contact insert module, number of positions: 5, power contacts: 5, control contacts: 0, Pin, Push-in connection, 400 V, 16 A, 0.14 mm<sup>2</sup> ... 2.5 mm<sup>2</sup>, application: Power

---