

Contact insert module - HC-M-06-PT-F

1424224

ID:1424224

Please be informed that the data shown in this PDF document is generated from our Online Catalog. Please find the complete data in the user documentation. Our General Terms of Use for Downloads are valid.



Contact insert module, number of positions: 6, power contacts: 6, control contacts: 0, Socket, Push-in connection, 500 V, 16 A, 0.5 mm² ... 2.5 mm², application: Power

Your advantages

- Easy installation without tools, even when mounted, with push-in connection technology
- Shortest installation time compared to other connection technologies
- Quick and effortless wiring, in particular when space is tight
- Automatic cabling with robots possible
- Safe wiring and operation with color-coded actuators
- Shock and vibration-resistant in accordance with DIN EN 61373

Commercial Data

Item number	1424224
Packing unit	1 pc
Minimum order quantity	1 pc
Product Key	BF7ACE
Catalog Page	Page 577 (C-2-2019)
GTIN	4055626369556
Weight per Piece (including packing)	19.1 g
Weight per Piece (excluding packing)	19.1 g
Customs tariff number	85366990
Country of origin	CN

Contact insert module - HC-M-06-PT-F

1424224

ID:1424224

Technical Data

Notes

General	for flexible conductors with or without ferrules
General	Connectors may be operated only when there is no load/voltage.
General	Flexible conductors may be used without ferrules as long as they comply with IEC 60228 Class 1 ... 5. The individual litz wires must have a min. diameter of 0.17 mm.
General	For HEAVYCON housing type B6 ... B48 and module carrier frame HC-M-B...MF-...

Product properties

Product type	Modular contact insert
Number of positions	6
Connection profile	6
Application	Power
Number of module slots	1
No. of power contacts	6
No. of control contacts	0
Contact type	turned
Series	HC-M-06

Insulation characteristics

Overvoltage category	III
Degree of pollution	3

Connection data

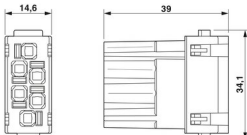
Connection technology

Connection technology	Push-in connection
-----------------------	--------------------

Conductor connection

Conductor cross section	0.5 mm ² ... 2.5 mm ²
Connection cross section AWG	20 ... 14
Stripping length of the individual wire	10 mm

Dimensions

Dimensional drawing	
Width	34.1 mm
Height	39 mm
Length	14.6 mm

Contact insert module - HC-M-06-PT-F

1424224

ID:1424224

Mechanical characteristics

Contact diameter	2.5 mm
------------------	--------

Electrical properties

Rated voltage (III/3)	500 V
Rated surge voltage	6 kV
Rated current	16 A (power contacts)

Material specifications

Flammability rating according to UL 94	V0
Contact material	Copper alloy
Contact surface material	Ag
Contact carrier material	PC

Connector

Insertion/withdrawal cycles	≥ 500
-----------------------------	-------

Cable / line

Stripping length of the individual wire	10 mm
---	-------

Mounting

Assembly instructions	To ensure correct use, installation in housing with IP54 protection or better is required
-----------------------	---

Ambient conditions

Ambient temperature (operation)	-40 °C ... 125 °C
---------------------------------	-------------------

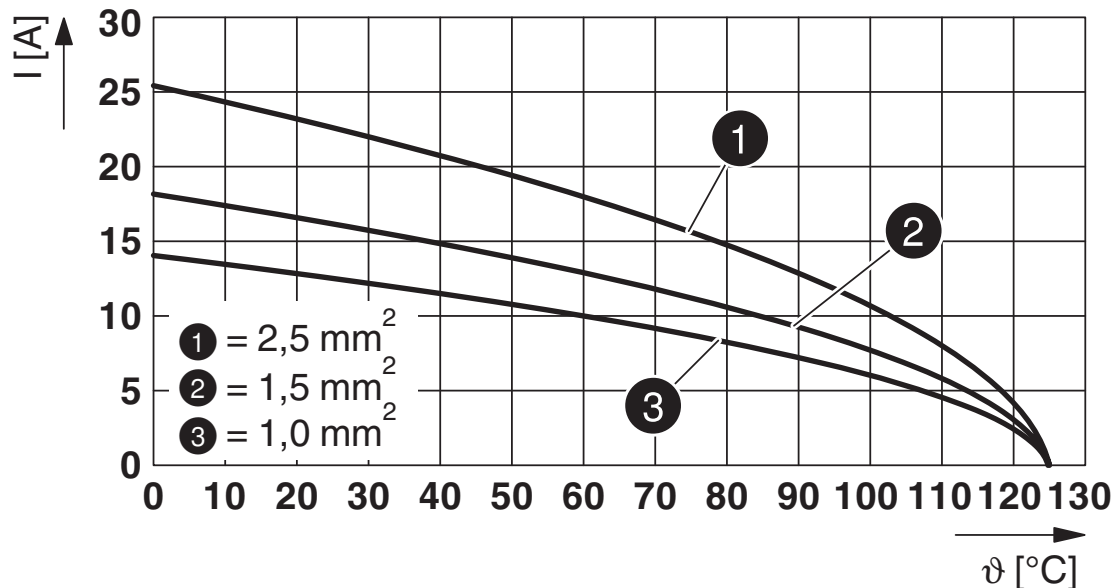
Contact insert module - HC-M-06-PT-F

1424224

ID:1424224

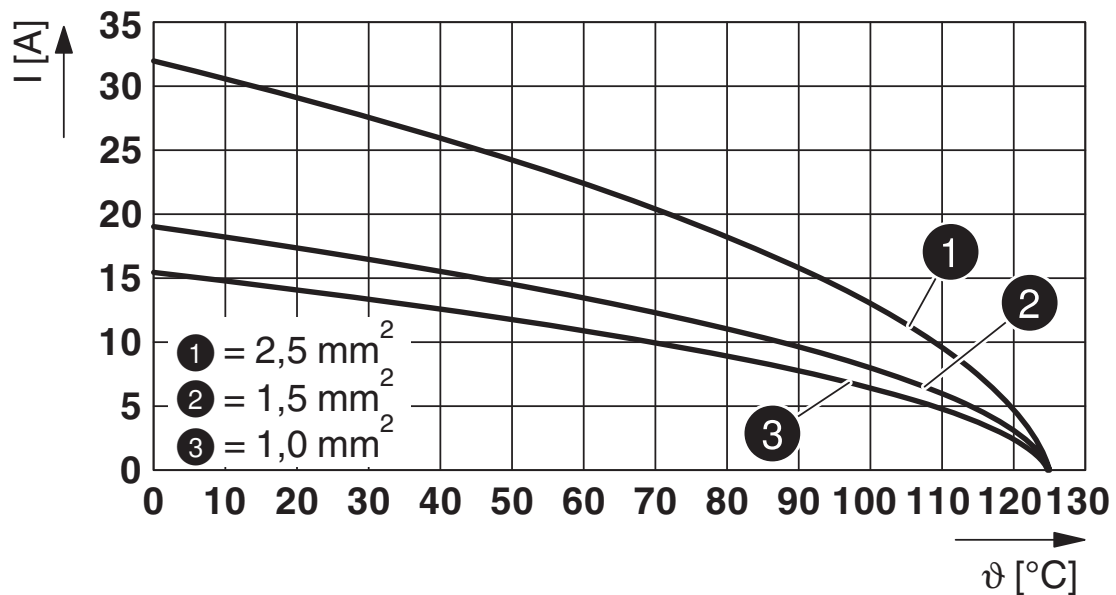
Drawings

Diagram



Derating diagram for flexible conductors

Diagram



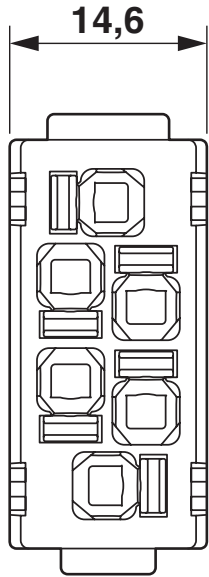
Derating diagram for flexible conductors with ferrule

Contact insert module - HC-M-06-PT-F

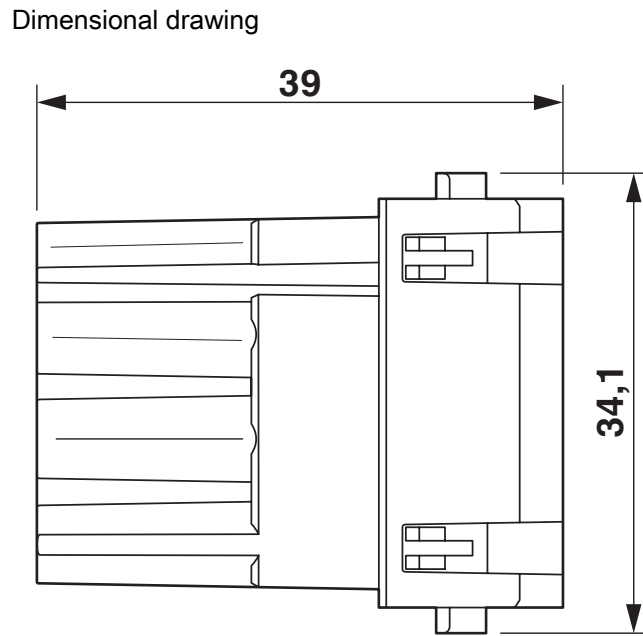
1424224

ID:1424224

Dimensional drawing



Dimensional drawing

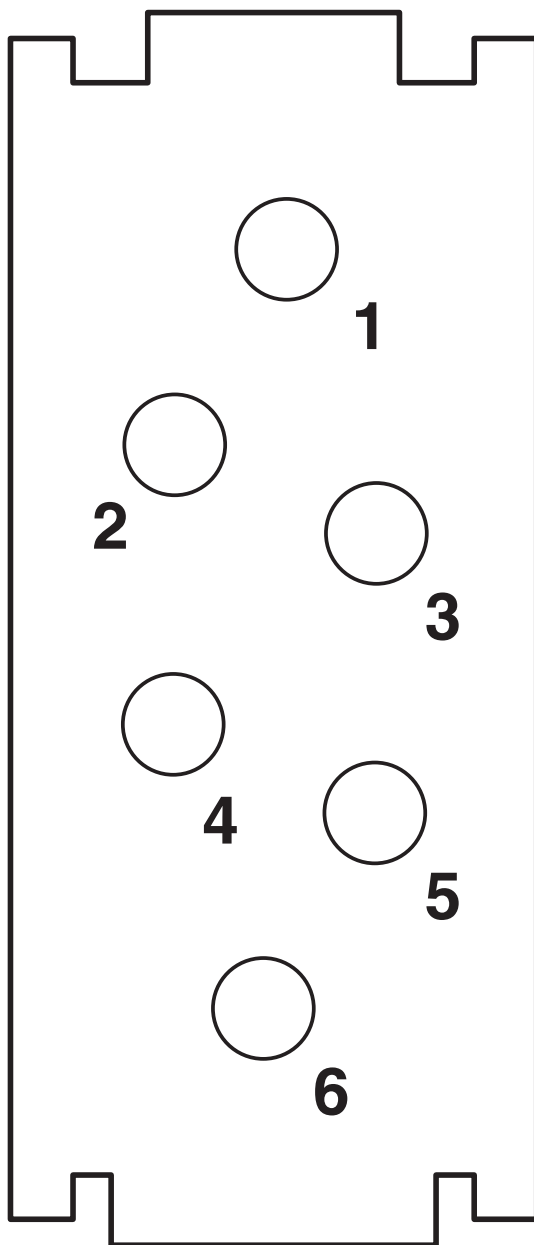


Contact insert module - HC-M-06-PT-F

1424224

ID:1424224

Schematic diagram



Connector pin assignment, connection side

Contact insert module - HC-M-06-PT-F

1424224

ID:1424224

Approvals



EAC

Approval ID: RU C-DE.AI30.B.01102



EAC

Approval ID: RU C-DE.BL08.B.00511



UL Recognized

Approval ID: E468743

	Nominal Voltage U_N	Nominal Current I_N	Cross Section AWG	Cross Section mm^2
	600 V	16 A	- 14	-

Contact insert module - HC-M-06-PT-F

1424224

ID:1424224

Classifications

ECLASS

ECLASS-9.0	27440217
ECLASS-10.0.1	27440217
ECLASS-11.0	27440217

ETIM

ETIM 8.0	EC000438
----------	----------

UNSPSC

UNSPSC 21.0	39121400
-------------	----------

Contact insert module - HC-M-06-PT-F

1424224

ID:1424224

Environmental Product Compliance

China RoHS	Environmentally friendly use period: unlimited = EFUP-e
	No hazardous substances above threshold values

Contact insert module - HC-M-06-PT-F

1424224

ID:1424224

Accessories

Coding element

Coding element - HC-CBU-MOD - 1636130

ID:1636130



Coding socket for coding up to 16 connectors, for HC Modular

Coding element

Coding element - HC-CST-MOD - 1636127

ID:1636127



Coding peg for coding up to 16 connectors, for HC Modular

Contact insert module - HC-M-06-PT-F

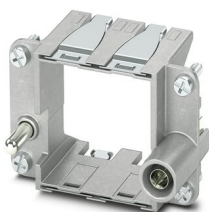
1424224

ID:1424224

Module carrier frame

Module carrier frame - HC-M-B06-MFH-B - 1182085

ID:1182085



Module carrier frame, size: B6, type : for the panel mounting side (a, b, c, ...), 4 mm² ... 6 mm², application: Module carrier frame

Module carrier frame

Module carrier frame - HC-M-B10-MFH-B - 1182088

ID:1182088



Module carrier frame, size: B10, type : for the panel mounting side (a, b, c, ...), 4 mm² ... 6 mm², application: Module carrier frame

Contact insert module - HC-M-06-PT-F

1424224

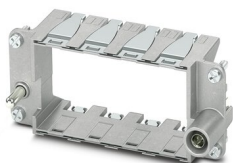
ID:1424224

Module carrier frame

Module carrier frame - HC-M-B16-MFH-B - 1182090

ID:1182090

Module carrier frame, size: B16, type : for the panel mounting side (a, b, c, ...), 4 mm² ... 6 mm², application: Module carrier frame



Module carrier frame

Module carrier frame - HC-M-B24-MFH-B - 1182094

ID:1182094

Module carrier frame, size: B24, type : for the panel mounting side (a, b, c, ...), 4 mm² ... 6 mm², application: Module carrier frame



Contact insert module - HC-M-06-PT-F

1424224

ID:1424224

Module carrier frame

Module carrier frame - HC-M-B06-MFH-H - 1182087

ID:1182087



Module carrier frame, size: B6, type : for the sleeve side (A, B, C, ...), 4 mm² ... 6 mm², application: Module carrier frame

Module carrier frame

Module carrier frame - HC-M-B10-MFH-H - 1182089

ID:1182089



Module carrier frame, size: B10, type : for the sleeve side (A, B, C, ...), 4 mm² ... 6 mm², application: Module carrier frame

Contact insert module - HC-M-06-PT-F

1424224

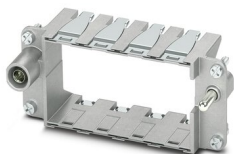
ID:1424224

Module carrier frame

Module carrier frame - HC-M-B16-MFH-H - 1182093

ID:1182093

Module carrier frame, size: B16, type : for the sleeve side (A, B, C, ...), 4 mm² ...
6 mm², application: Module carrier frame



Module carrier frame

Module carrier frame - HC-M-B24-MFH-H - 1182095

ID:1182095

Module carrier frame, size: B24, type : for the sleeve side (A, B, C, ...), 4 mm² ...
6 mm², application: Module carrier frame



Contact insert module - HC-M-06-PT-F

1424224

ID:1424224

Crimping pliers

Crimping pliers - CRIMPFOX CENTRUS 6S - 1213144

ID:1213144



Crimping pliers, for uninsulated and insulated ferrules, DIN 46228 Part 1 and 4, from 0.14 mm² ... 6 mm², also for TWIN ferrules up to 2 x 4 mm², automatic cross section adjustment, lateral insertion, equipped with fall protection

Crimping pliers

Crimping pliers - CRIMPFOX 6 - 1212034

ID:1212034



Crimping pliers, for ferrules without insulating collar according to DIN 46228 Part 1 and ferrules with insulating collar according to DIN 46228 Part 4, 0.25 mm² ... 6.0 mm², lateral entry, trapezoidal crimp

Contact insert module - HC-M-06-PT-F

1424224

ID:1424224

Electrical crimping tool

Electrical crimping tool - CF CRIMPHANDY 0,5 - 1212463

ID:1212463



Mobile handheld device, battery-powered, for processing on-tape ferrules 0.5 mm² with functional end, suitable for PVC insulated conductors (H05V-K), incl. battery, charger, CUTFOX 12 cable cutter, waste guide plate 2, service tool for error correction, and one strip of ferrules 0.5 mm², packed in a robust case.

Electrical crimping tool

Electrical crimping tool - CF CRIMPHANDY 0,75 - 1212464

ID:1212464



Mobile handheld device, battery-powered, for processing on-tape ferrules 0.75 mm² with functional end, suitable for PVC insulated conductors (H05V-K), incl. battery, charger, CUTFOX 12 cable cutter, waste guide plate 2, service tool for error correction, and one strip of ferrules 0.75 mm², packed in a robust case.

Contact insert module - HC-M-06-PT-F

1424224

ID:1424224

Electrical crimping tool

Electrical crimping tool - CF CRIMPHANDY 1,0 - 1212465

ID:1212465



Mobile handheld device, battery-powered, for processing on-tape ferrules 1.0 mm² with functional end, suitable for PVC insulated conductors (H05V-K), incl. battery, charger, CUTFOX 12 cable cutter, waste guide plate 2, service tool for error correction, and one strip of ferrules 1.0 mm², packed in a robust case.

Electrical crimping tool

Electrical crimping tool - CF CRIMPHANDY 1,5 - 1212466

ID:1212466



Mobile handheld device, battery-powered, for processing on-tape ferrules 1.5 mm² with functional end, suitable for PVC insulated conductors (H07V-K), incl. battery, charger, CUTFOX 12 cable cutter, waste guide plate 2, service tool for error correction, and one strip of ferrules 1.5 mm², packed in a robust case.

Contact insert module - HC-M-06-PT-F

1424224

ID:1424224

Contact insert module

Contact insert module - HC-M-06-PT-M - 1424225

ID:1424225



Contact insert module, number of positions: 6, power contacts: 6, control contacts: 0, Pin, Push-in connection, 500 V, 16 A, 0.5 mm² ... 2.5 mm², application: Power