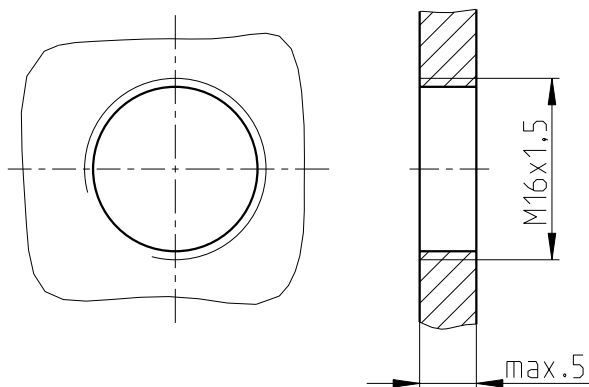
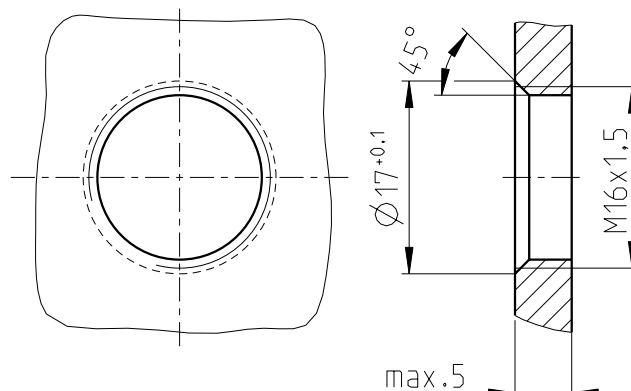


Installation recommendation M16x1,5 for SACC.... design DSI

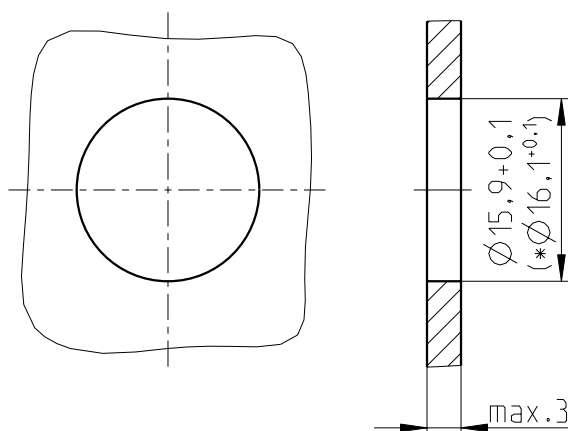
mounting with flat gasket
(thread without chamfer)
can be screwed from the rear



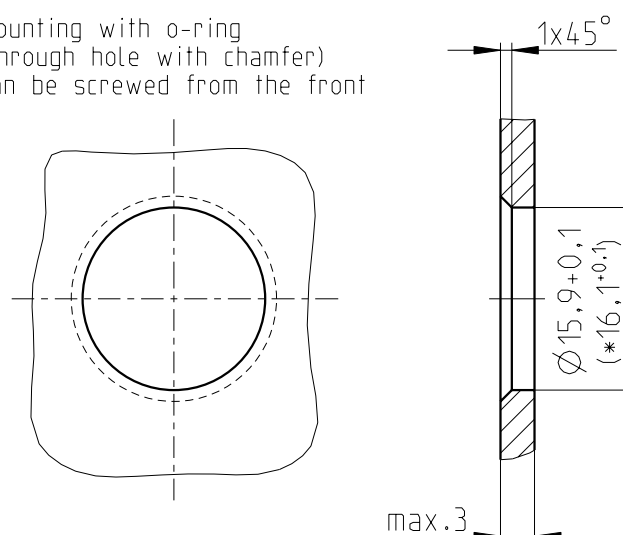
mounting with o-ring
(thread with chamfer)
can be screwed from the rear



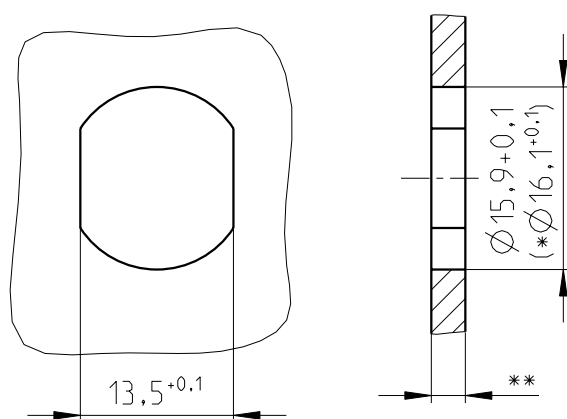
mounting with flat gasket
(through hole without chamfer)
can be screwed from the front



mounting with o-ring
(through hole with chamfer)
can be screwed from the front



mounting with flat gasket or o-ring
(cut-out with anti-twist protection without chamfer)
can be screwed from the front



Installation recommendation only valid for housings
with bevels (anti-twist protection)!

tightening torque:
flat gasket 2-3Nm
o-ring 3-4Nm

* Ø16,1+0,1 at centered mounting
** Front panel thickness max.3mm.
If <2mm technical features
could be limited.

technical changes reserved

doc.-no.: 00662223

Index 3 / 2018-12-10