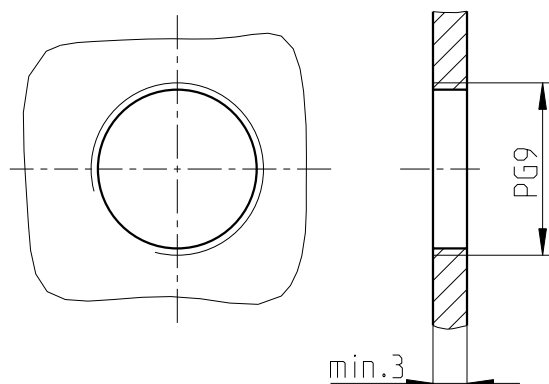
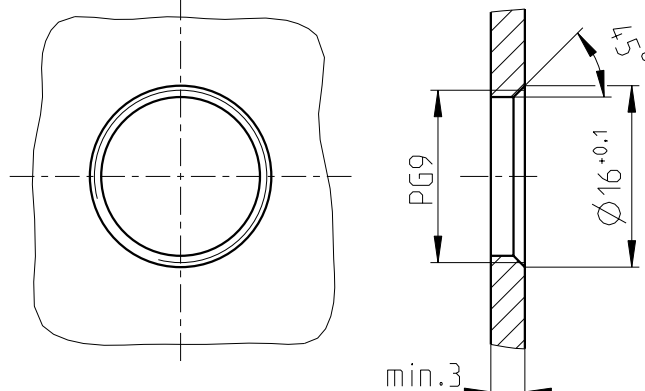


Installation recommendation PG9 for SACC.... design E

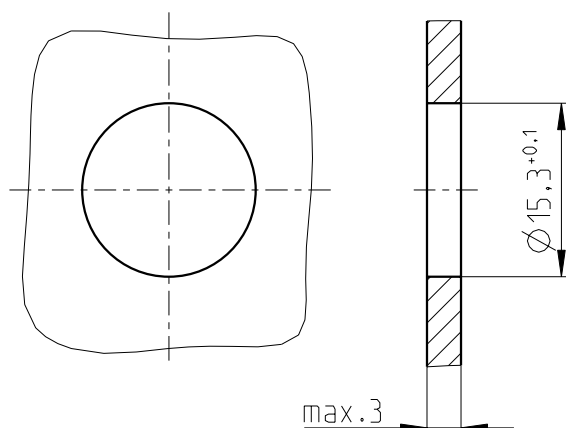
mounting with flat gasket
(thread without chamfer)
can be screwed from the front



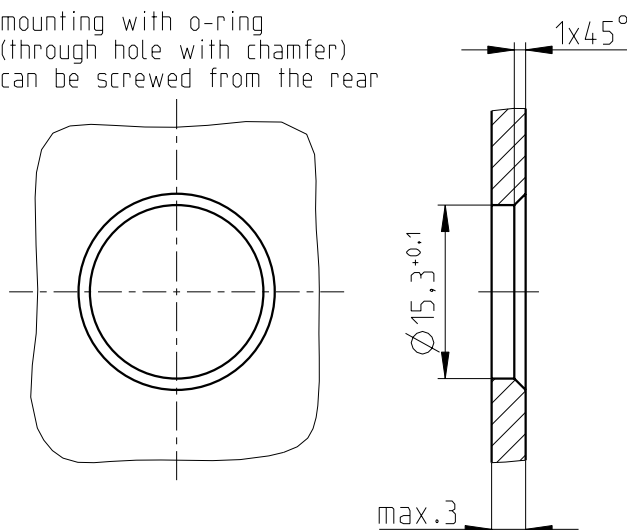
mounting with o-ring
(thread with chamfer)
can be screwed from the front



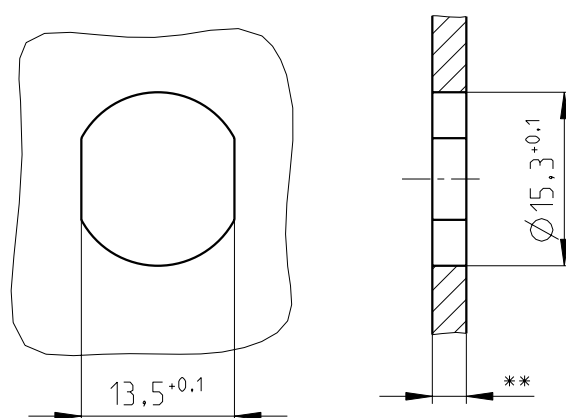
mounting with flat gasket
(through hole without chamfer)
can be screwed from the rear



mounting with o-ring
(through hole with chamfer)
can be screwed from the rear



mounting with flat gasket and o-ring
(cut-out with anti-twist protection without chamfer)
can be screwed from the rear



Installation recommendation only valid for housings
with bevels (anti-twist protection)!

tightening torque:
flat gasket 2-3Nm
o-ring 3-4Nm

** Front panel thickness max.3mm.
If <2mm technical features
could be limited.

technical changes reserved

dok.-no.: 00674458

Index 2 / 2013-02-26