

2200W 3-Phase AC Gear Motor

ATO-GEAR-HV2200

High torque AC gear motor with competitive price, operated by 3-phase 220V/380V power supply, input power 3 hp (2.2kW), gear ratio range from 3:1~100:1 for selection, torque 3.2~126 kg.m, supports vertical or horizontal installation. For power cut engine conveniently, a brake is recommended to match with AC geared motor.

Basic Specification

Model	ATO-CV40-2200-10-S
Rated Power	3 hp (2200W)
Rated Voltage	3-phase 220V, 50/60Hz 3-phase 380-415V, 50/60Hz
Gear Ratio	3:1/ 5:1/ 10:1/ 15:1/ 20:1/ 25:1/ 30:1/ 40:1/ 45:1/ 50:1/ 60:1/ 70:1/ 80:1/ 90:1/ 100:1
Duty	Continuous running
Working Environment	Temperature 10°C~+40°C Humidity ≤90%
Pole	4P (6P)
Working Height	≤1000m
Standard	GB755/IEC-60034

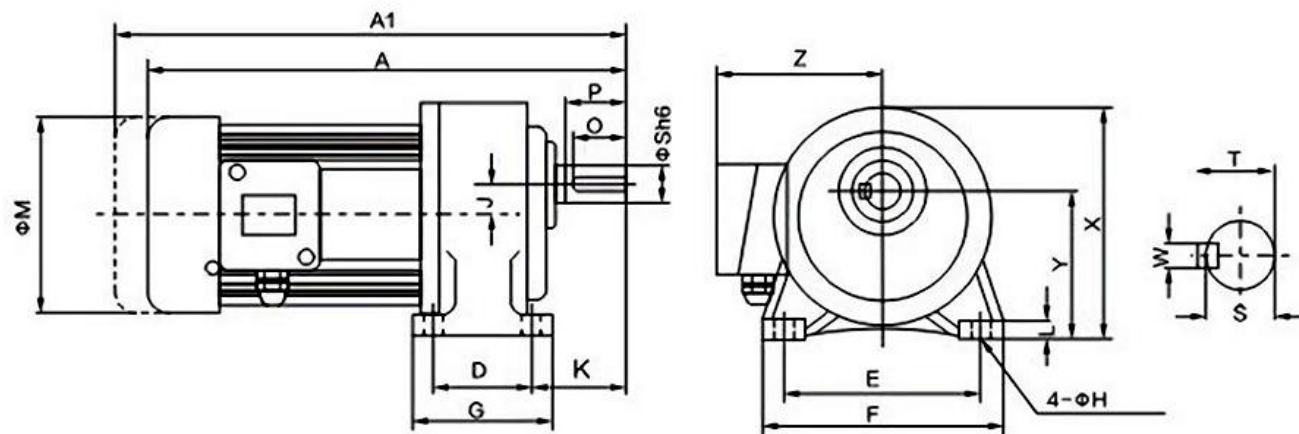
2.2kW AC Gear Motor Load Current Value

Phase	3-Phase							
Frequency	50Hz				60Hz			
Voltage	220V	380V	415V	440V	220V	380V	440V	460V
Current	8.94A	5.18A	4.47A	4.47A	8.70A	5.04A	4.35A	4.16A

2.2kW AC Gear Motor Output Torque

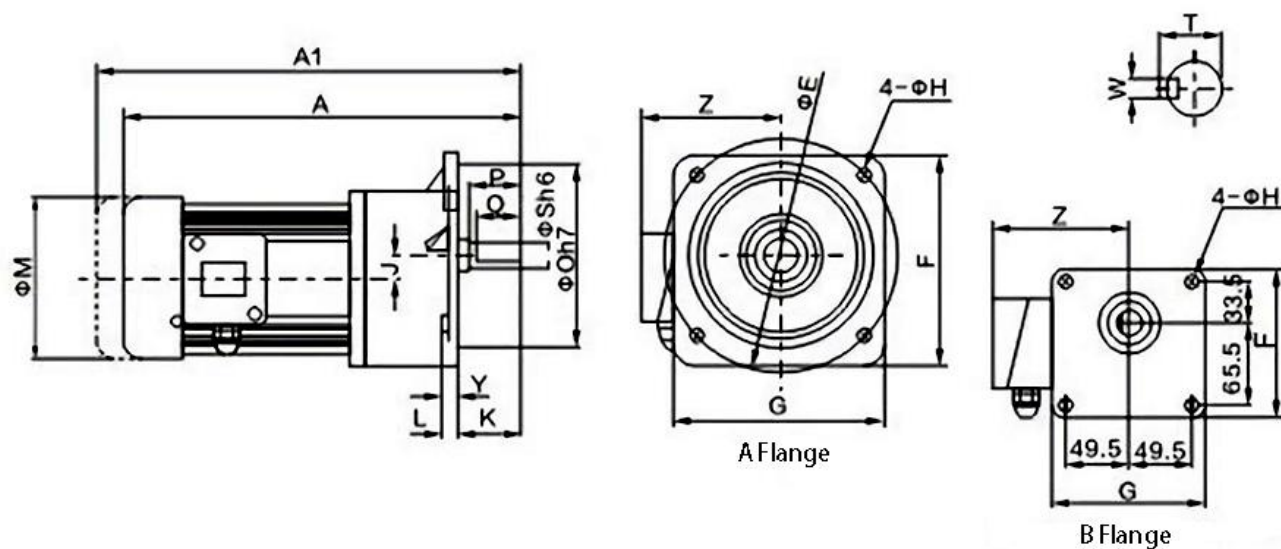
Gear Ratio		3	5	10	15	20	25	30	40	45	50	60	70	80	90	100
Output Speed (rpm)	50Hz	465	300	150	100	75	60	50	37	33	30	25	21	19	17	15
	60Hz	570	360	180	120	90	72	60	45	40	36	30	25	23	20	18
Output Torque (kg.m)	50Hz	3.8	6.72	13.7	20.1	26.8	33.6	40.3	52	49.8	65.1	78.1	92.5	105	113	126
	60Hz	3.2	5.6	11.2	16.8	22.4	28	33.6	43.4	49.6	54.3	65.1	77.1	87.5	94.3	105

2.2kW Horizontal AC Gear Motor Dimensions (Unit: mm)



Gear Ratio	Shaft Diameter	A	D	E	F	G	H	J	K	L	M	X	Y	Z	S	P	Q	W	T	Weight (kg)
3~40	40	530	150	210	265	205	15	36	83	23	220	250	165	160	40	65	60	10	43.5	58
45~100	50	580	170	265	335	238	18	51	120	31.5	220	308	200	160	50	80	75	14	54	97

2.2kW Vertical AC Gear Motor Dimensions (Unit: mm)



Gear Ratio	Shaft Diameter	A	D	E	F	G	H	J	K	L	M	Y	Z	S	P	Q	W	T	Weight (kg)
3~40	40	530	230	310	290	268	15	36	83	21	220	5	160	40	65	60	10	43.5	58
45~100	50	580	280	390	369	341	18	51	92	25	220	5	160	50	80	75	14	54	97